

IP68 LC ASSEMBLIES

This IP68 LC cable assembly supports fiber cabling in virtually any extreme environments, such as FTTH, base stations, transportation and railway systems, as well as industry networks.

Sealed to IP68 with reliable bayonet locking design feature, the assembly assures excellent optical performance and support utmost protection in harsh environment.

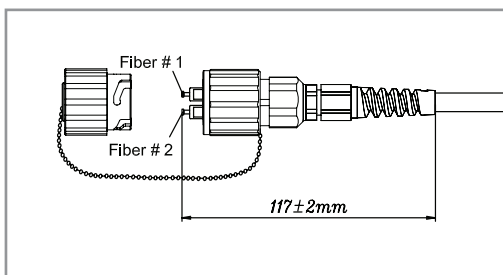
Available in Duplex LC connector with IP68 outer housing, customer can specify cable length and fiber mode to fit for their unique needs.



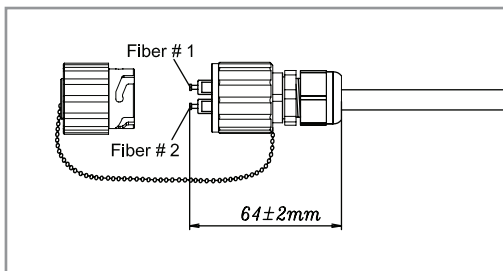
KEY FEATURES :

- Standard Duplex LC connector interface
- Sealed to IP68 for utmost protection
- Bayonet locking design makes ease of mating even in inconvenient locations
- Receptacle of different flange styles to fit for different installation needs
- Fiber optic connector complies to Telcordia GR-326-CORE and TIA/EIA standards
- Comprehensive assemblies solutions reduce cost of site termination while enhanced performance

ASSEMBLY WITH REGULAR BOOT



ASSEMBLY WITH SHORT BOOT



Specifications

Fiber Count Option	2-Fiber
Cable and Cable Jacket	Tactical Cable with Thermoplastic PolyUrethane jacket
Connector Option	Duplex LC
Boot Options	Regular Boot (Overall length includes connector plug : 117mm) Short Boot (Overall length includes connector plug : 64mm)
Receptacle Flange Types	Hexagon Flange Square Flange
Available Fiber Modes	Singlemode (OS 1/2) Multimode (OM1, OM2, OM3, OM4)
Ingress Protection	IP68
Mating Mechanism	Bayonet
Mechanical Performance	Straight Pulling Force 25Kgs
Mating Durability	500 Mating Cycles
Operating Temperature	- 40°C to + 70°C
Compliance	RoHS , Telcordia GR-326-CORE and TIA/EIA Standards

Optical Performance

Connector & Fiber Mode	Insertion Loss	Return Loss
Standard LC	Singlemode	≤ 0.3dB UPC ≥ 55dB
	Multimode	(Typical - 0.1dB) PC ≥ 25dB

IP68 LC ASSEMBLIES

ASSEMBLIES OPTIONS

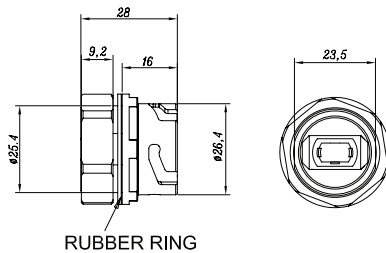
IP68 LC to LC Duplex Assembly

Fiber Mode	Part No. ^{[1], [2]}	
	with Regular Boot	with Short Boot
OS1	IP1LCLC1S1AT-xxxM	IP1LCLC2S1AT-xxxM
OM1	IP1LCLC1M1AT-xxxM	IP1LCLC2M1AT-xxxM
OM2	IP1LCLC1M2AT-xxxM	IP1LCLC2M2AT-xxxM
OM3	IP1LCLC1M3AT-xxxM	IP1LCLC2M3AT-xxxM
OM4	IP1LCLC1M4AT-xxxM	IP1LCLC2M4AT-xxxM

[1] "xxx" refers to cable length in meter, please fill up your required length by 3 digits
 [2] Please specify if you need different boot style in 2 ends

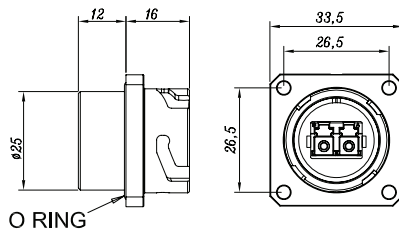
RECEPTACLE OPTIONS

IP68 Receptacle with LC Adapter, Hexagon Flange



Fiber Mode	Part No.
OS1/2	IP3LA1H
OM1 ~ OM4	IP3LA2H

IP68 Receptacle with LC Adapter, Square Flange



Fiber Mode	Part No.
OS1/2	IP3LA1S
OM1 ~ OM4	IP3LA2S