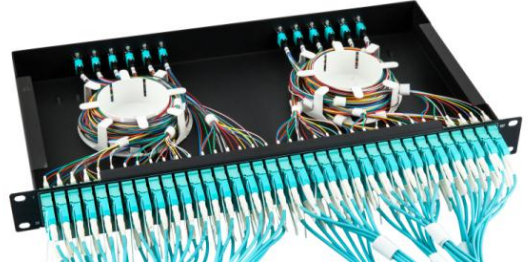


# ULTRA HD MPO - LC PATCHING ENCLOSURE

240mm depth rack-mountable HD enclosure in 1U design fits installation environment with space constraint and is the most cost-efficient solution for high density applications.

It supports 144-Fiber per 1U rack space which greatly increases usable density up to 50%, maximizing space utilization in cabinets. Plug-and-play design allows fast installation and deployment.



\* Only for illustration purpose, outlet patching cables are not included.



## KEY FEATURES:

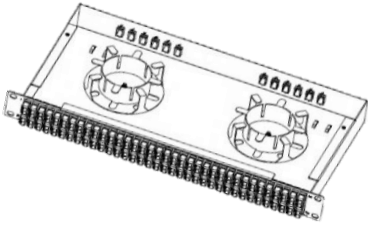
- Industry-leading density of 144-Fiber per 1U rack space
- Compatible with all 19" EIA standard cabinets and rack system
- Slim design with 240mm depth, suitable for space constrained environment
- Plug-and-play system reduces cost of on-site deployment
- 12- or 24-Fiber MPO connectors terminated with laser optimized fibers
- Economical and easy to handle, no tools are required

## Specifications

<b>Main Material</b>	Standard offer : Steel
	Option of Aluminum on request
<b>Dimension Height (U) x Width (W) x Depth (D)</b>	1U x 435mm x 240mm
<b>Available Interfaces</b>	12-Fiber MPO (Male) to LC
	24-Fiber MPO (Male) to LC
<b>Available Fiber Modes</b>	Singlemode (OS1/2)
	Multimode (OM1,OM2,OM3,OM4)
<b>Color &amp; Coating</b>	Black Powder Coating
<b>Compliance</b>	RoHS, EIA-310, IEEE802.3ba
<b>Preloaded Units</b>	12-Fiber MPO-LC Hydra Assemblies x 12pcs OR 24-Fiber MPO-LC Hydra Assemblies x 6pcs
	MPO Adapter [at the rear]
	LC Adapter [at the front]
	Cable Management Spools
	Fixed Rackmount Ears [2pcs]

# ULTRA HD MPO - LC PATCHING ENCLOSURE

## PRELOADED WITH 144-FIBER, 12x12-Fiber MPO-LC HYDRA ASSEMBLIES

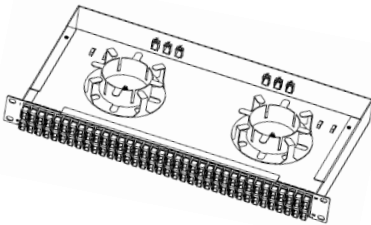


Preloaded:  
12pcs of 12-Fiber MPO to LC Hydra Assemblies,  
144-Port LC Adapters at the Front,  
12pcs of MPO Adapters at the Rear

Item Descriptions			Part No.	
No. of MPO Port	Fiber Mode	Color of LC Adapter	Type A MPO Adapter	Type B MPO Adapter
12 pcs	OS1/2	Blue	HDP12MS1A1D	HDP12MS1B1D
12 pcs	OM1	Beige	HDP12MM1A1D	HDP12MM1B1D
12 pcs	OM2	Beige	HDP12MM2A1D	HDP12MM2B1D
12 pcs	OM3	Aqua	HDP12MM3A1D	HDP12MM3B1D
12 pcs	OM4	Aqua	HDP12MM4A1D	HDP12MM4B1D

- [1] The above Part No. refer to using standard MPO connector, please change the last character from "D" to "B" when Low Loss MPO is required.
- [2] All MPO-LC patching enclosures are pinned [Male], please contact Olabs when Non-pinned [Female] enclosure is required.
- [3] "Straight through" channeling is used for the MPO-LC assemblies, please contact Olabs if other channeling method is used.

## PRELOADED WITH 144-FIBER, 6x24-Fiber MPO-LC HYDRA ASSEMBLIES



Preloaded:  
6pcs of 24-Fiber MPO to LC Hydra Assemblies,  
144-Port LC Adapters at the Front,  
6pcs of MPO Adapters at the Rear

Item Descriptions			Part No.	
No. of MPO Port	Fiber Mode	Color of LC Adapter	Type A MPO Adapter	Type B MPO Adapter
6 pcs	OS1/2	Blue	HDP24MS1A1D	HDP24MS1B1D
6 pcs	OM1	Beige	HDP24MM1A1D	HDP24MM1B1D
6 pcs	OM2	Beige	HDP24MM2A1D	HDP24MM2B1D
6 pcs	OM3	Aqua	HDP24MM3A1D	HDP24MM3B1D
6 pcs	OM4	Aqua	HDP24MM4A1D	HDP24MM4B1D

- [1] The above Part No. refer to using standard MPO connector, please change the last character from "D" to "B" when Low Loss MPO is required.
- [2] All MPO-LC patching enclosures are pinned [Male], please contact Olabs when Non-pinned [Female] enclosure is required.
- [3] "Straight through" channeling is used for the MPO-LC assemblies, please contact Olabs if other channeling method is used.