

FiberFlex™ – SC No Polish Connector

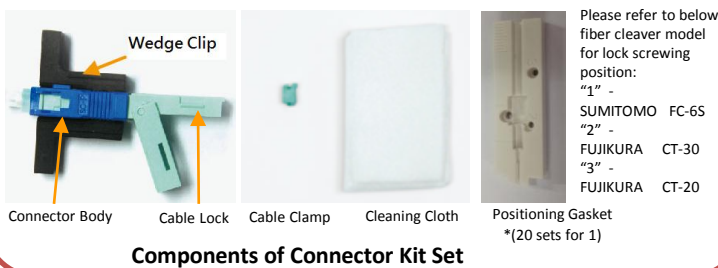
General:

- This installation & assembly instructions describe the procedure for Olabs FiberFlex™ SC No Polish connector which applies for bow-type drop fiber cable termination.

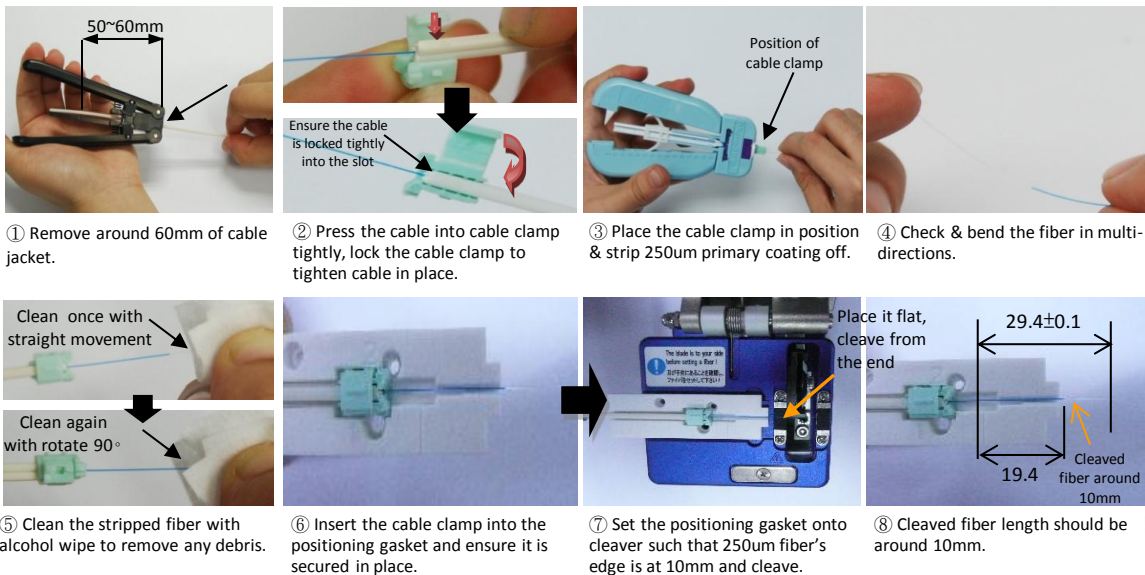
Precautions:

- Always wear eye protection when handling optical fibers. Dispose of cut or cleaved fibers properly to avoid skin or eyes damages.
- Never look into the connector end which may have a laser coupled to it. Laser light is not visible & may damage your eyes.
- The product is sensitive to dirt or dust. Unpack the product until ready for installation.

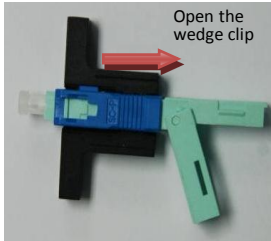
1.0 Components & Tools Required



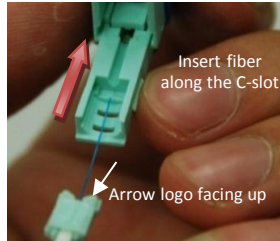
2.0 Fiber Cable Preparation



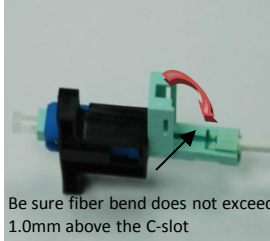
3.0 Assembly Procedure



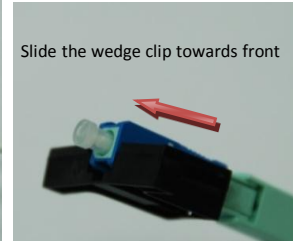
① The wedge clip is locked with connector body. Open the rear part as shown in diagram.



② Insert the cleaved fiber slowly into the rear of connector until connection is made.



③ Make a bend in the fiber to maintain connection. Close the lid when done.



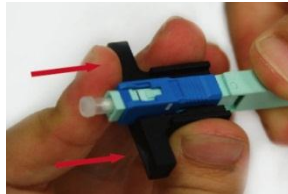
④ Release the wedge clip and complete.

**** Keep the ferrule's dust cap on until ready for installation**

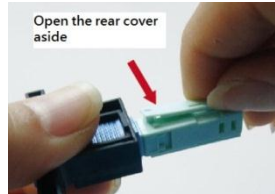
4.0 Disassembly Procedure



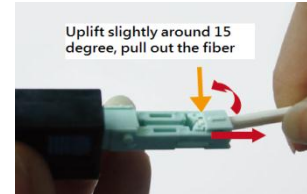
① Assemble the wedge clip.



② Unlock the fiber.



③ Open the rear cover aside.



④ Pull out the fiber and reassemble the rear cover.

**** Assembly repeatability is more than 5 times with proper handling**

Information subject to change without notice.

CONTACT OUR TEAM TODAY at sales@olabstech.com FOR MORE DETAILS